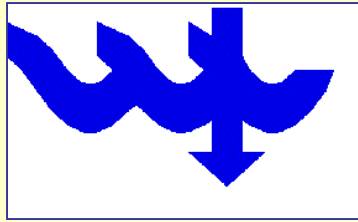


# Israel Oceanographic & Limnological Research



## Israel Marine Data Center ISRAMAR



### The first year results

#### 1. ISRAMAR foundation (December 2000)

- Establishing of the ISRAMAR office
- Buying hardware, software
- The software installation

#### 2. Data base development

Mediterranean oceanographic information system

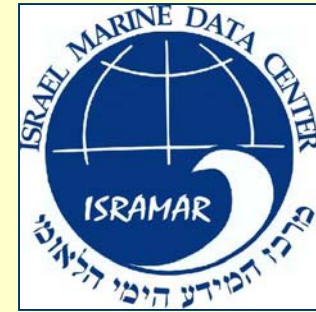
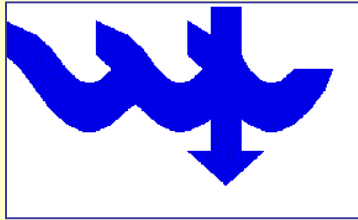
MEDACC

- Single user interface
- Intranet interface

SQL database

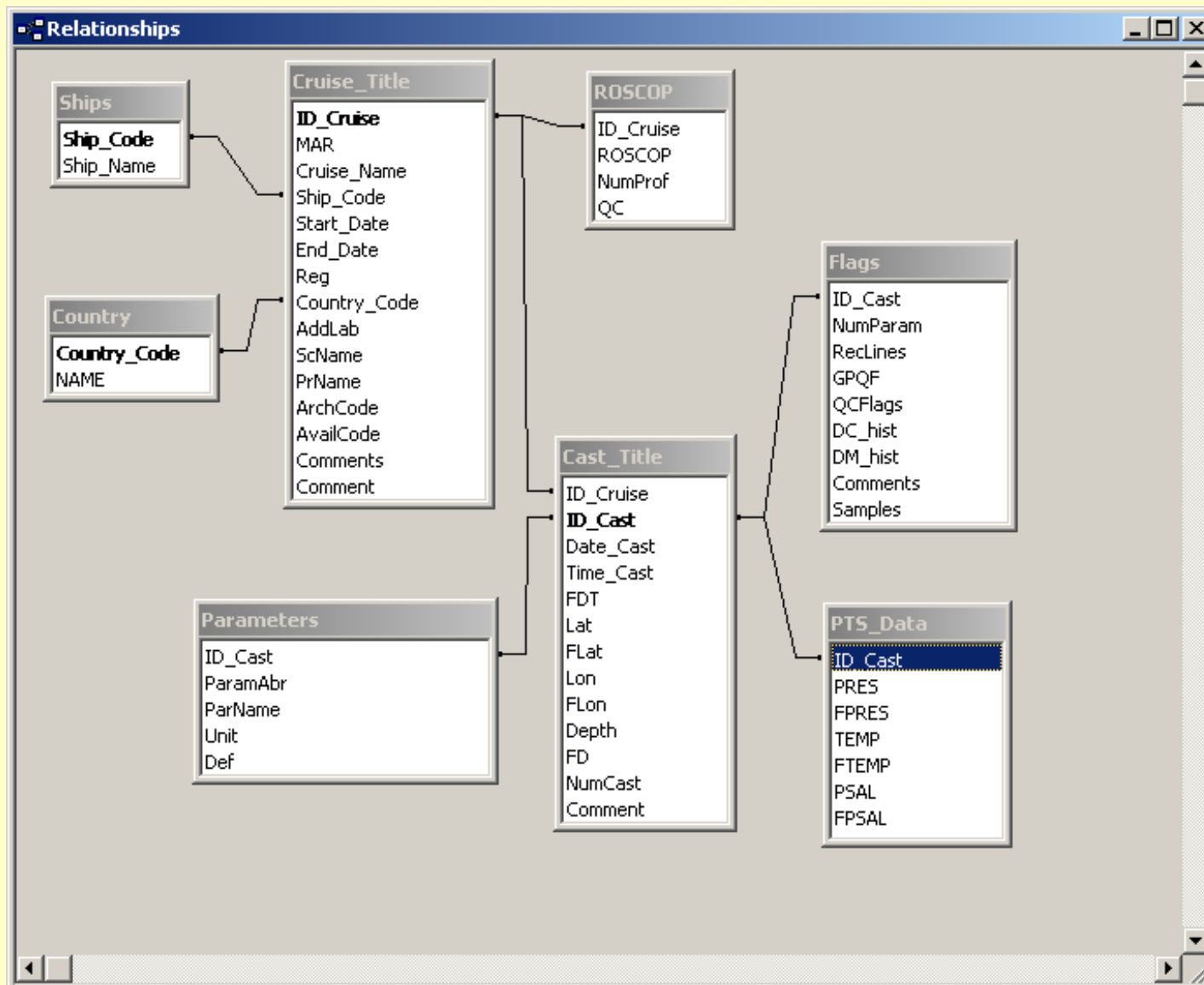
Israel shelf heavy metal information system.

#### 3. Maintenance of oceanographic real time data updating on the IOLR web site



# **Mediterranean Oceanographic ACCESS Database (MEDACC)**

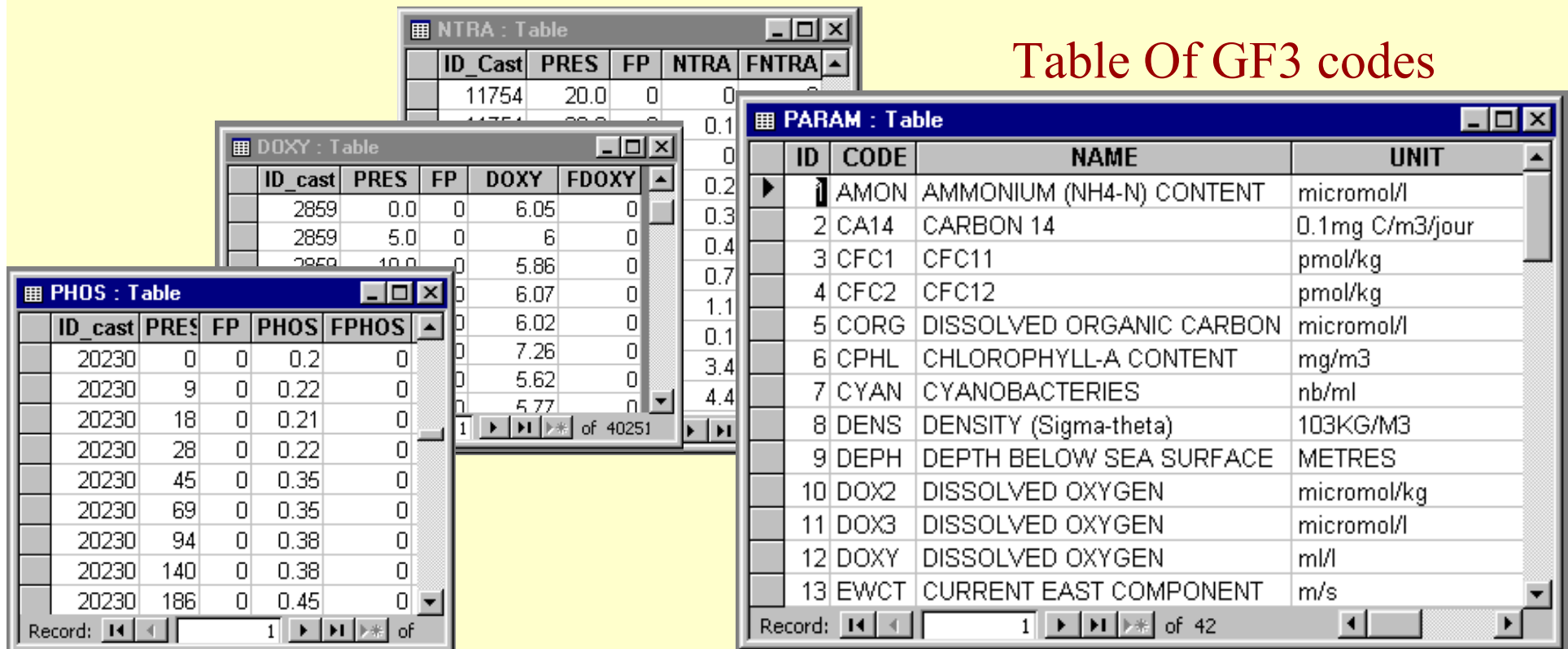
## Primary Tables created by manager during database initialization stage.



## Secondary tables and information loading in the Database

1. Input format according to MEDATLAS requirements.
2. Loading data to primary tables and creating secondary tables by the VBA data input procedure.
3. Secondary tables created according to GF3 codes for measured parameters.

Table Of GF3 codes



ID	CODE	NAME	UNIT
1	AMON	AMMONIUM (NH4-N) CONTENT	micromol/l
2	CA14	CARBON 14	0.1mg C/m3/jour
3	CFC1	CFC11	pmol/kg
4	CFC2	CFC12	pmol/kg
5	CORG	DISSOLVED ORGANIC CARBON	micromol/l
6	CPHL	CHLOROPHYLL-A CONTENT	mg/m3
7	CYAN	CYANOBACTERIES	nb/ml
8	DENS	DENSITY (Sigma-theta)	103KG/M3
9	DEPH	DEPTH BELOW SEA SURFACE	METRES
10	DOX2	DISSOLVED OXYGEN	micromol/kg
11	DOX3	DISSOLVED OXYGEN	micromol/l
12	DOXY	DISSOLVED OXYGEN	ml/l
13	EWCT	CURRENT EAST COMPONENT	m/s

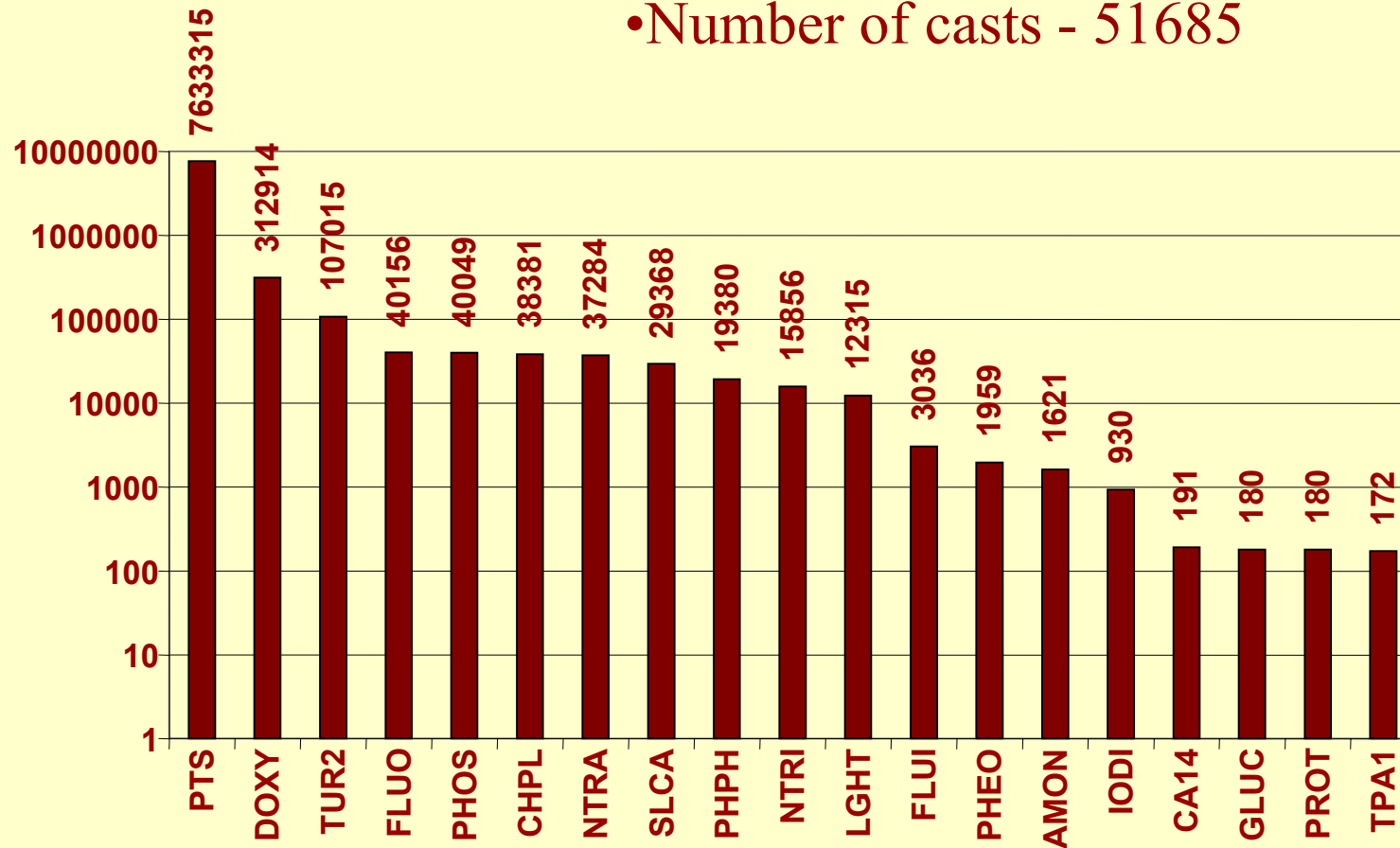
ID_Cast	PRES	FP	NTRA	FNTRA
11754	20.0	0	0	0
11754	20.0	0	0.1	0
11754	20.0	0	0.2	0
11754	20.0	0	0.3	0
11754	20.0	0	0.4	0
11754	20.0	0	0.7	0
11754	20.0	0	1.1	0
11754	20.0	0	0.1	0
11754	20.0	0	0.1	0
11754	20.0	0	3.4	0
11754	20.0	0	4.4	0

ID_cast	PRES	FP	DOXY	FDOXY
2859	0.0	0	6.05	0
2859	5.0	0	6	0
2859	10.0	0	5.86	0
2859	15.0	0	6.07	0
2859	20.0	0	6.02	0
2859	25.0	0	7.26	0
2859	30.0	0	5.62	0
2859	35.0	0	5.77	0

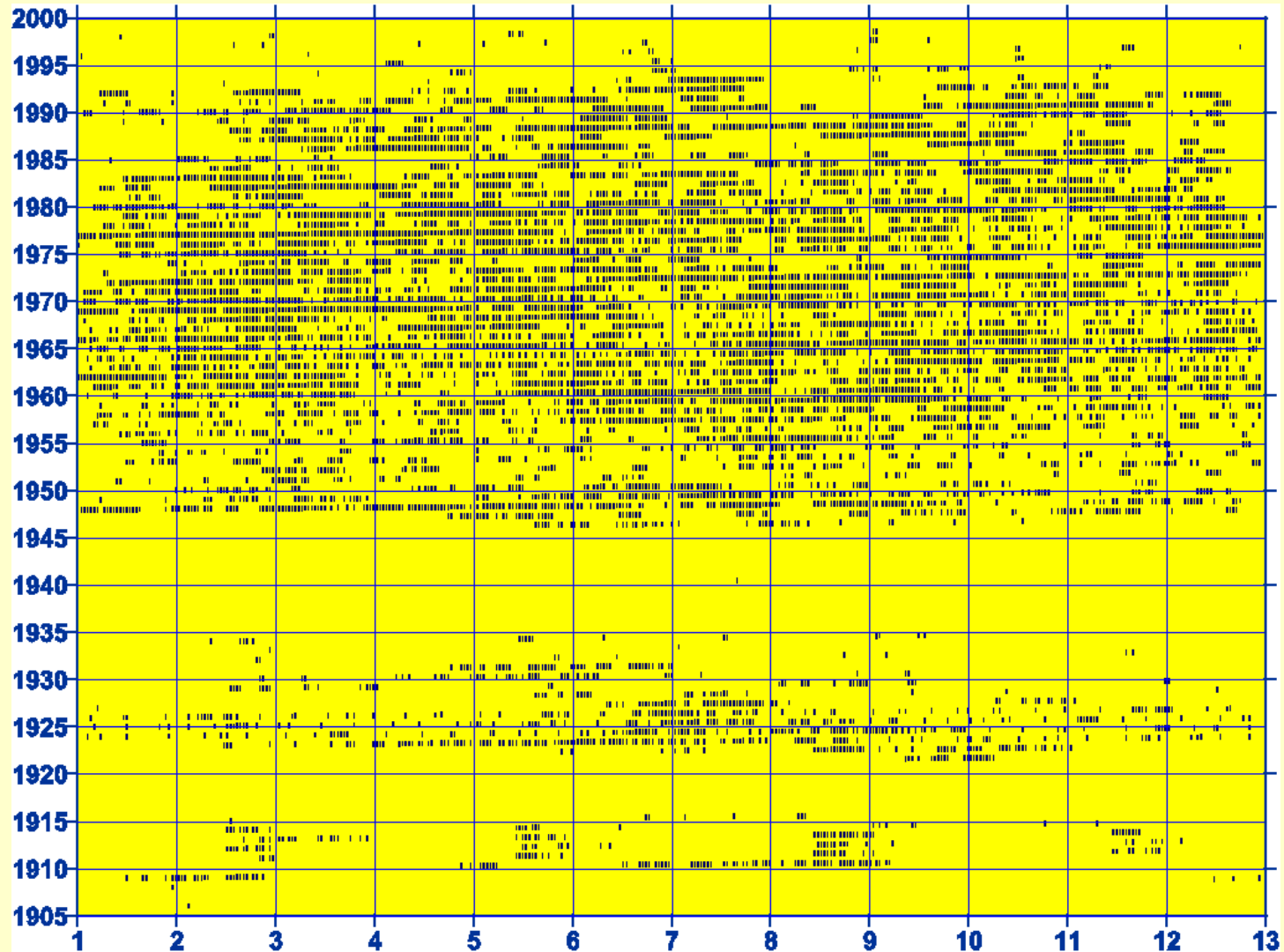
ID_cast	PRES	FP	PHOS	FPHOS
20230	0	0	0.2	0
20230	9	0	0.22	0
20230	18	0	0.21	0
20230	28	0	0.22	0
20230	45	0	0.35	0
20230	69	0	0.35	0
20230	94	0	0.38	0
20230	140	0	0.38	0
20230	186	0	0.45	0

# Main properties of the MEDACC

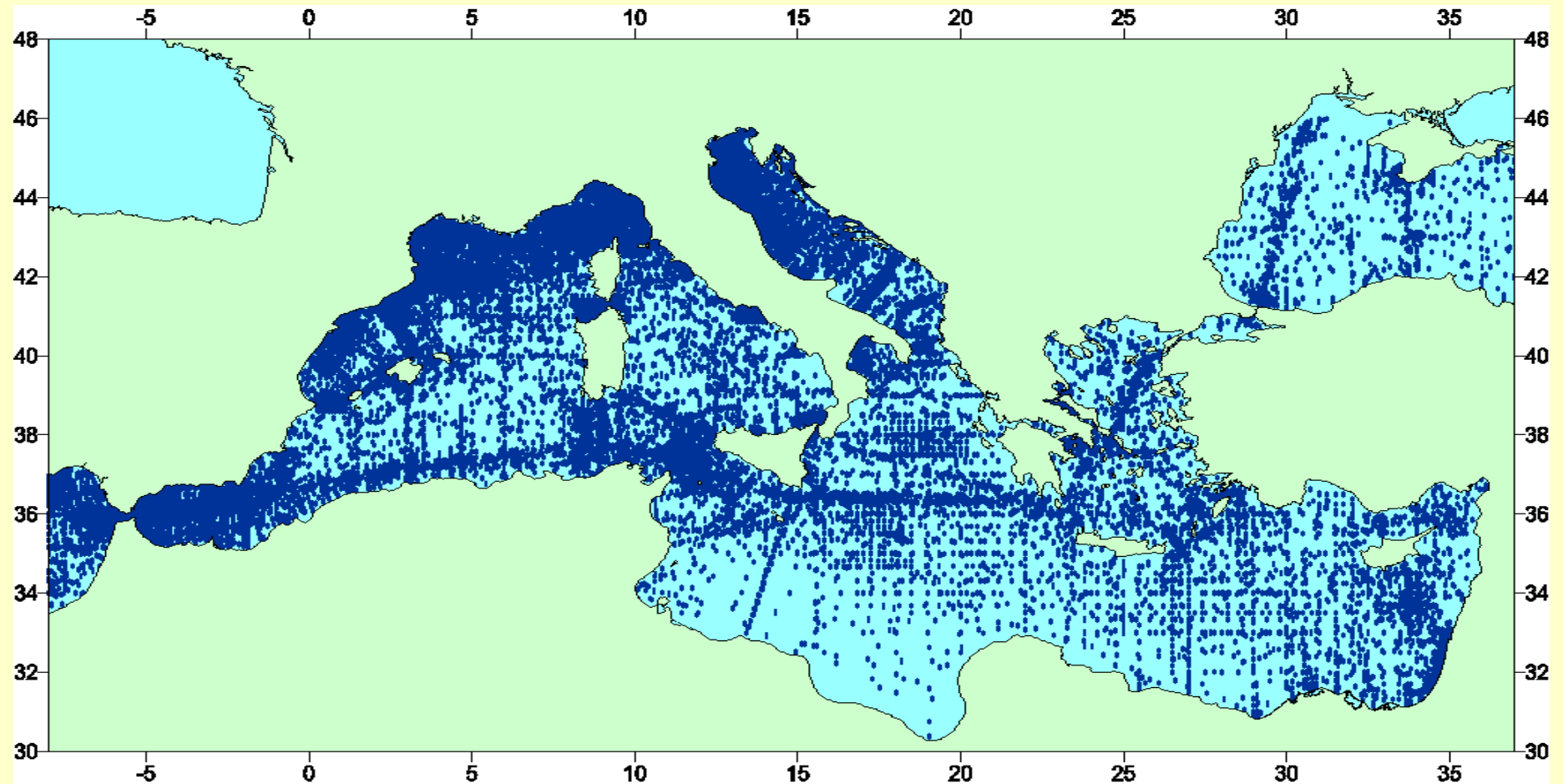
- File size - 400 Mb
- Number of cruisers - 1570
- Number of casts - 51685



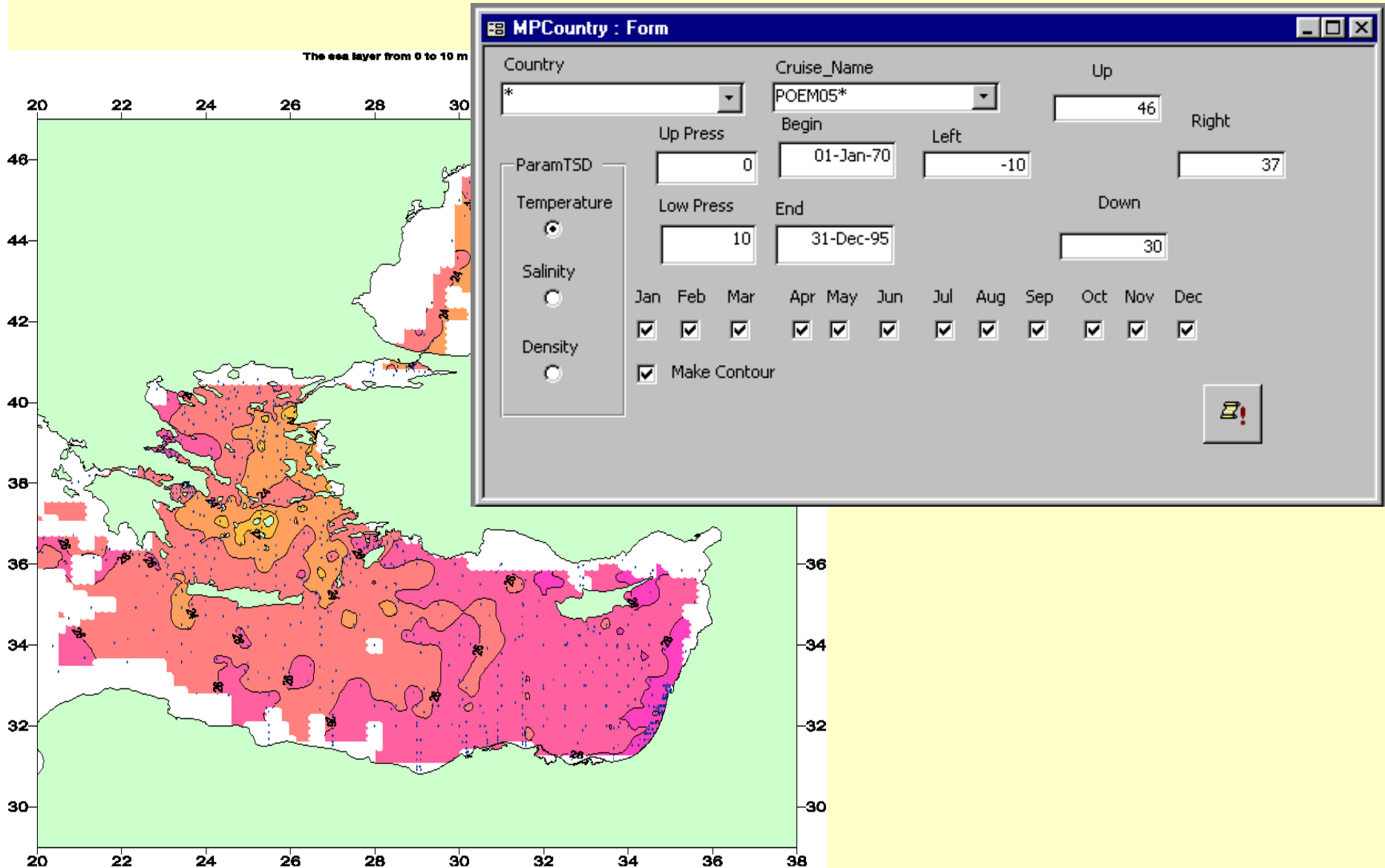
# Time distribution of casts in MEDACC



# Space distribution of casts in MEDACC



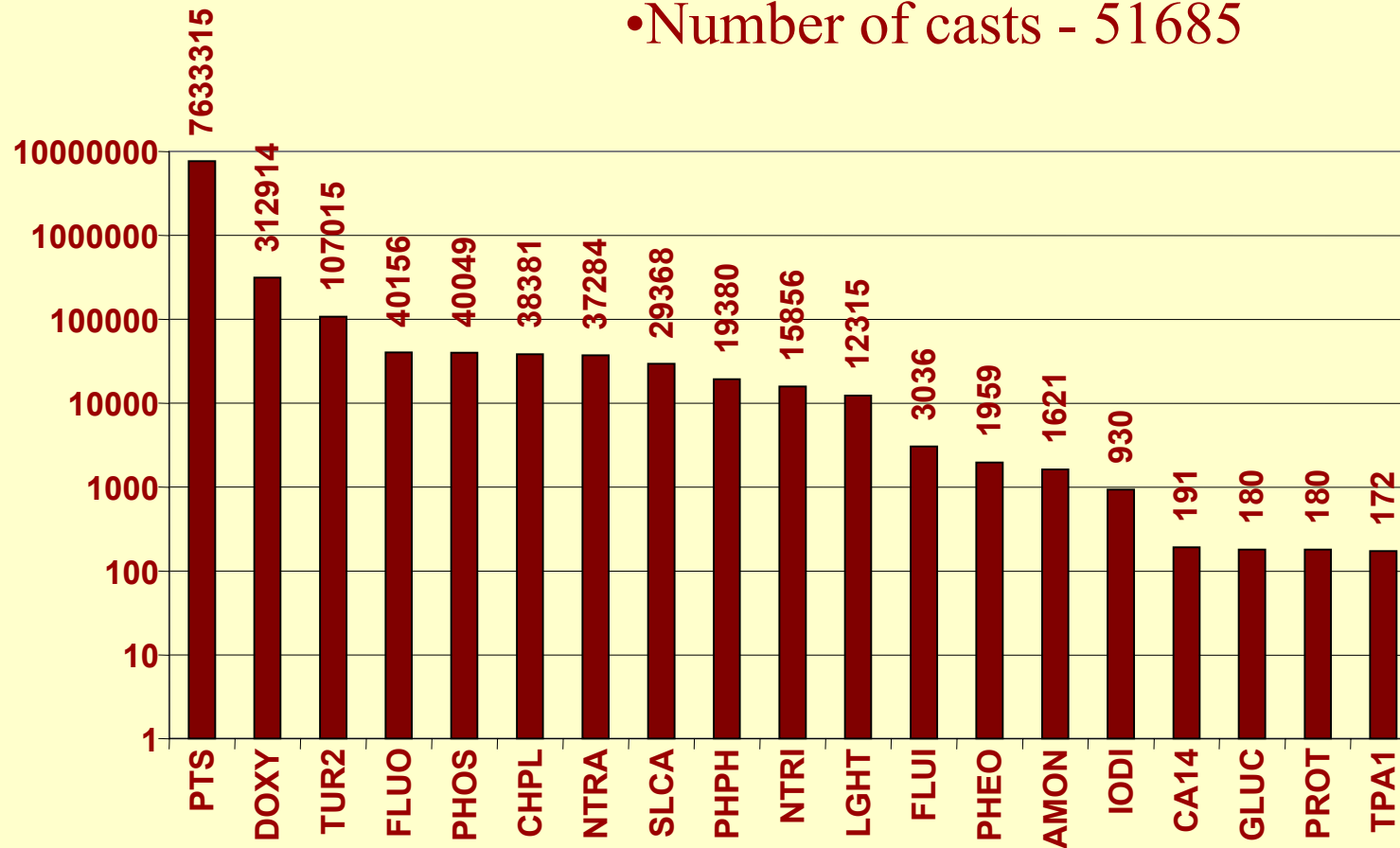
# Mapping a query result with “Surfer”





# Main properties of the MEDACC

- File size - 400 Mb
- Number of cruisers - 1570
- Number of casts - 51685



# Section Building


**SectionBuilding : Form**

NOT  Cruise Name: M51/2 NOT  Country: \*

Up: 46 Right: 37

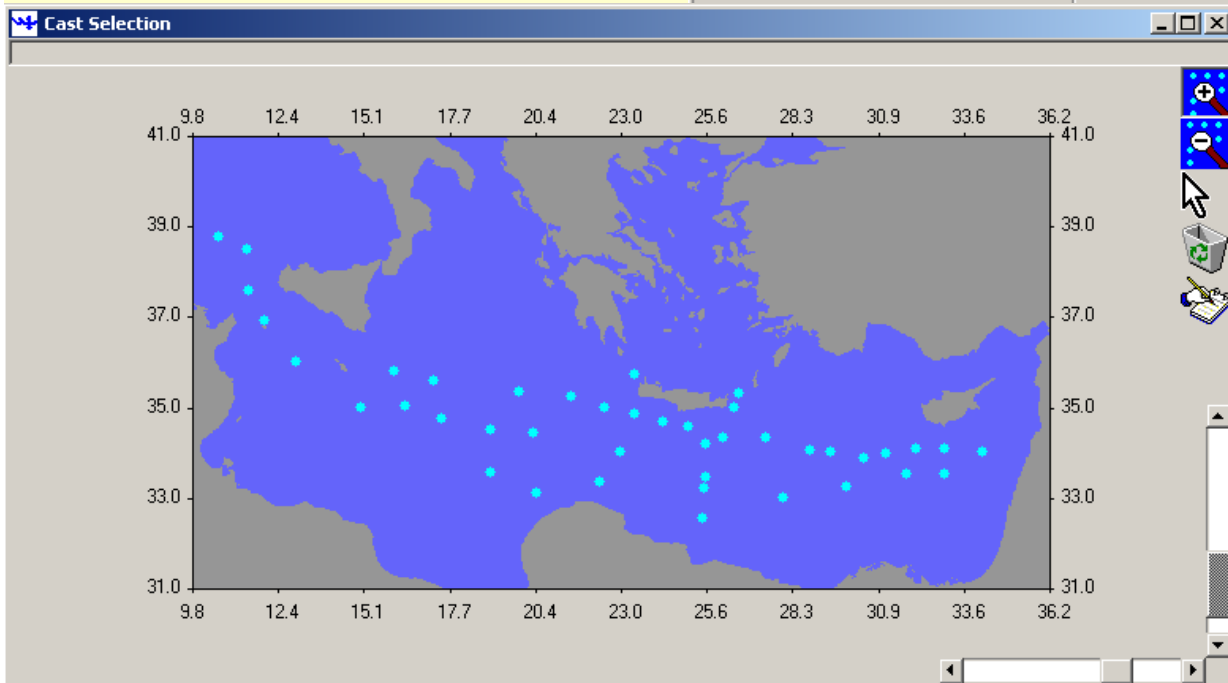
Begin: 01-Jan-1910 Left: -10

End: 01-Jan-2005 Down: 30

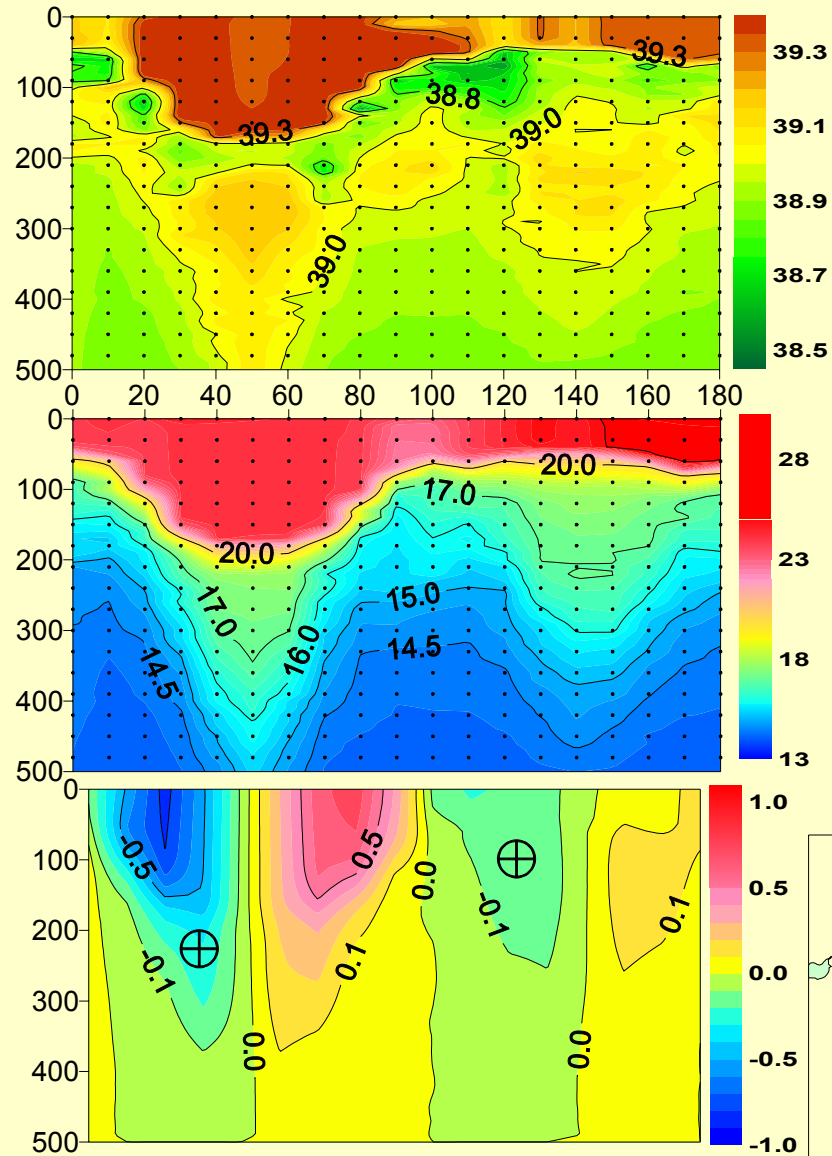
Jan  Feb  Mar  Apr  May  Jun  Jul  Aug  Sep  Oct  Nov  Dec  

Section Length/n.m.:  Max Depth/dba:  Depth Limit:  Step X /n.m.: 10 Step Z /n.m.: 10 Reference Level:

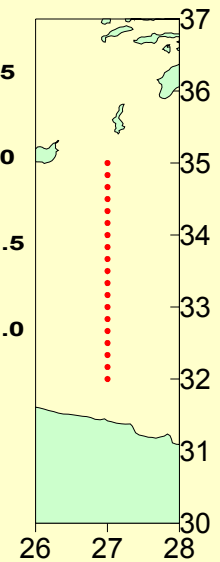
Temperature  Salinity  Density  Geostrophic Velocity  Potential Temperature and Density



# Section Building

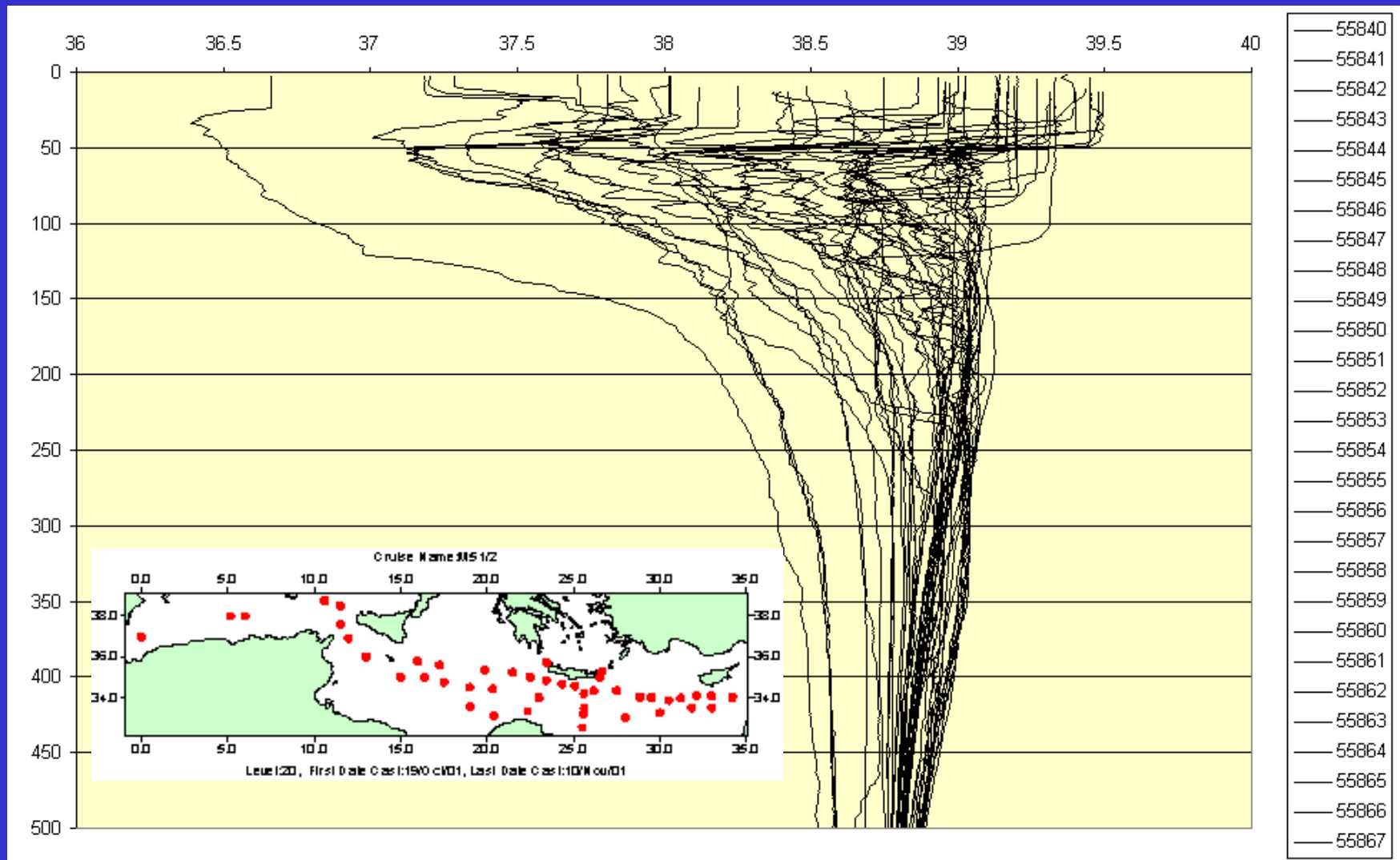


Summer 1991  
POEMBC: SHIKMONA

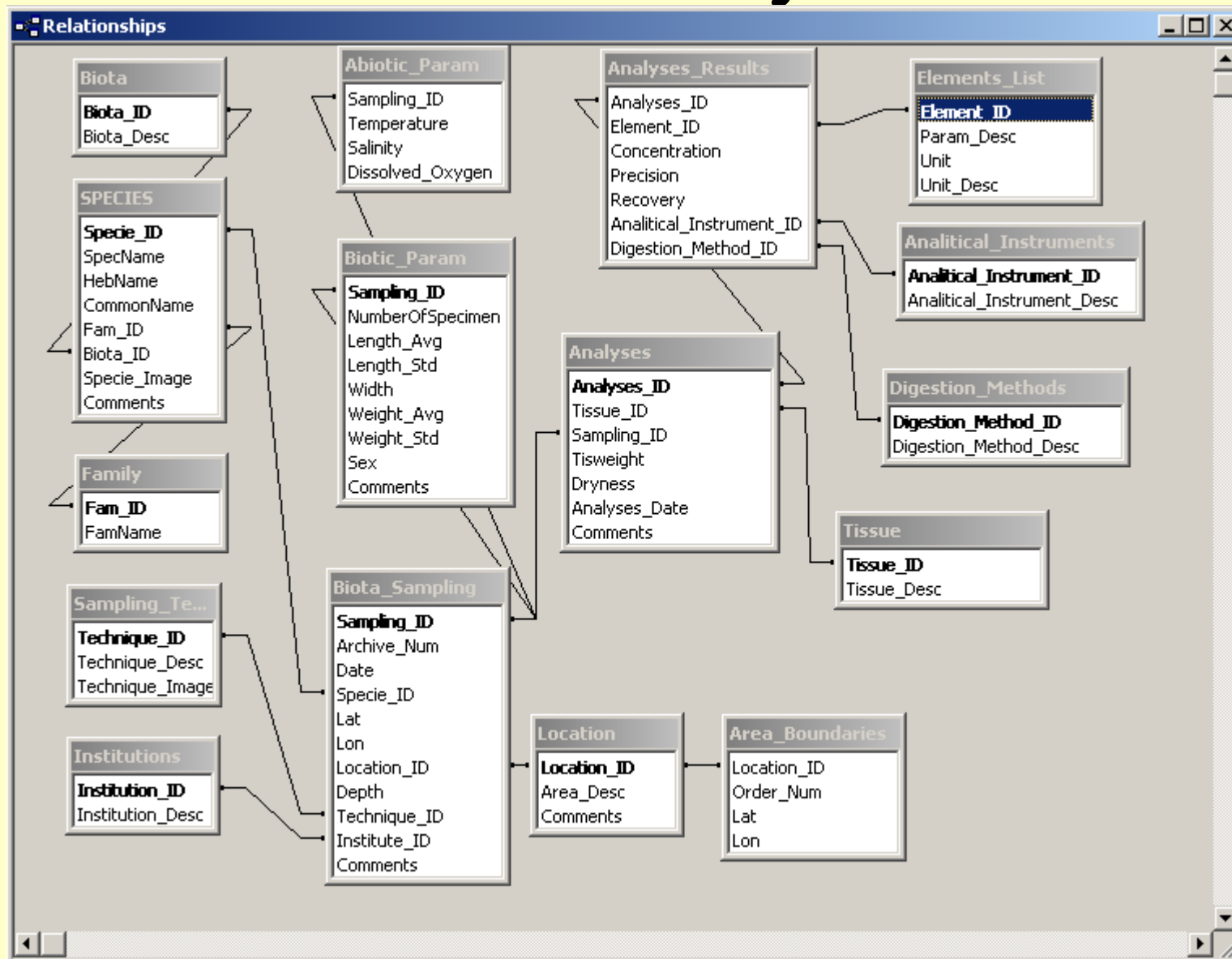


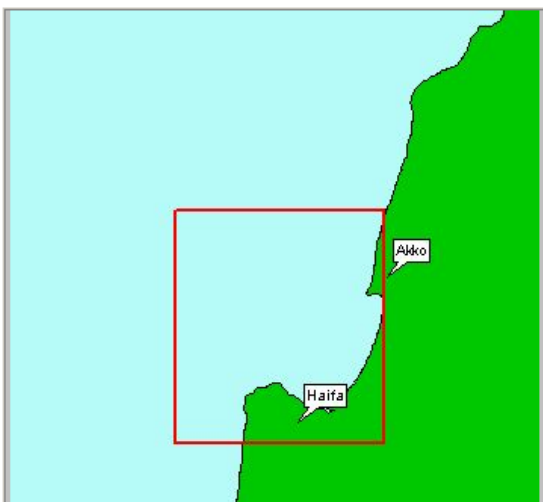


# Vertical Distributions



# Israel shelf heavy metal information system





**Month:**  
 1  2  3  4  5  6  7  8  9  10  11  12

**Selected Area**

North:   
 West:   East:   
 South:

**Typical Area**

Coordinates:

Information for selected area

Specie Name:	Hebrew Name:	Common Name:	Family Name:	Fish Image:						
<input type="text" value="Dentex gibbosus"/>	<input type="text" value="שנן החוט"/>	<input type="text" value="פרידה"/>	<input type="text" value="SPARIDAE"/>	<input type="button" value="Show Image"/>						
<b>Tissue:</b>	<input type="text" value="All"/>			<b>Elements:</b>						
	<input type="text" value="All"/>									
Years:	0	1	2	3	4	5	6	7	8	9
197_										
198_		<input checked="" type="checkbox"/>				<input checked="" type="checkbox"/>				
199_										
200_										

<http://isramar:1025/imd>

Specie Name:  
 Hebrew Name:  
 Common Name:  
 Family Name:



# IORL Heavy Metal Pollution Data Base

Query Result from 3/6/2002 7:21:13 PM

North: 32.9948

West: 34.8875

East: 35.0797

South: 32.7803

Archive_Num:	Specie:	Date:	Tissue:	Concentration, [mg/g wet wt.]:							
				Cd	Cu	Fe	Hg	Mn	Ni	Pb	Zn
3092	Diogenes pugilator	7/2/1990	Whole body	0.159	14.400	70.100	0.000	.	.	0.630	47.600
3093	Diogenes pugilator	7/2/1990	Whole body	0.451	11.300	30.800	0.000	.	.	1.280	44.000
3104	Diogenes pugilator	7/2/1990	Whole body	0.043	18.100	67.200	0.014	9.890	.	1.240	45.200
3183	Diogenes pugilator	7/29/1991	Whole body	0.083	15.500	19.100	0.015	8.230	.	0.000	24.400
3197	Diogenes pugilator	7/29/1991	Whole body	0.060	18.700	37.200	0.000	12.100	0.166	0.000	33.000
			Whole body	0.101	14.500	29.300	0.000	14.400	0.175	0.000	19.200
			Whole body	0.145	11.700	29.400	0.000	13.700	0.097	.	24.100
			Whole body	0.185	16.800	37.500	0.008	18.400	0.393	.	29.000
			Whole body	0.115	17.300	38.100	0.037	28.100	0.201	.	30.700
			Whole body	0.205	14.400	43.200	0.000	20.700	0.000	.	26.600
			Whole body	0.295	14.800	33.200	0.006	16.500	0.000	.	27.300
			Whole body	0.168	10.000	107.800	0.000	30.200	0.443	.	43.200
			Whole body	0.096	11.300	46.400	0.000	21.400	0.145	.	40.900
			Whole body	0.091	20.900	78.800	0.000	18.800	0.258	.	35.200
			Whole body	0.067	21.000	21.900	0.000	45.900	.	.	27.300
			Soft part (edible)	0.261	13.000	41.800	0.017	30.500	.	.	28.000

<http://isramar:1025/imdc/HeavyMetal/fishimage.asp?S...>

**Specie Name:** Euthynnus alletteratus  
**Hebrew Name:** טונית אטלנטית  
**Common Name:** טונה קטנה  
**Family Name:** SCORPAENIDAE

