

## **Public Institutes involved in GOOS related activities:**

IOR- Institute for Oceanography and Fisheries, Split & Dubrovnik

CIM-IRB-"Ruđer Bošković" Institute Center for Marine Research  
Rovinj & Zagreb

GIAM-University of Zagreb, Geophysical Institute "Andrija  
Mohorovicic"

HI-State Hydrographic Institute, Split

MMC-Marine Meteorology Centre, Split

# NATIONAL CONTRIBUTIONS TO GOOS IMPLEMENTATION

## contributions to GOOS-related research

- national monitoring activity (IOR, CIM-IRB, GIAM)  
(regularly performed seven times per year)
- other permanent coastal zone monitoring programs (IOR, CIM-IRB)  
(performed several times per year)
- planned participation in the ADRICOSM  
(CTD measurements in the coastal zone of the eastern middle Adriatic, XBT measurements across the South Adriatic)

## other contributions to GOOS

- planned participation in EACE (GIAM, IOR, HI)
- modeling in the frame of the ADRICOSM project (GIAM, IOR)

## 5. CONTRIBUTIONS TO ELEMENTS OF THE GOOS INITIAL OBSERVING SYSTEM

Meteorological measurements from the Voluntary Observing Ship (VOS) network of the WMO:

-The MMC, Split is included in the VOS activity, collecting the data from 37 ships (7 equipped well, the rest are partly. The data are send to the world centers in Germany and UK, and are available from the VOS archive in Netherlands.

Upper ocean measurements of the Ship of Opportunity Programme (SOOP):

-The MMC is preparing to be included for the SOOP activity very soon.

The Global Sea Level Observing System (GLOSS) network of tide gauges.

-HI, Split is included in the MedGLOSS (the initiative by CIESM)

## CONTRIBUTIONS TO GOOS-RELATED RESEARCH

- the principal research for the Ministry of Science and Technology performed by IOR, CIM-IRB and GIAM; in the frame of the above mentioned projects cruises are performed monthly

## OTHER CONTRIBUTIONS TO GOOS

- the IOR has been nominated designated marine data agency

Observations other than those in the GOOS Initial Observing System  
(e.g. Tide Gauges other than GLOSS)

- IOR has both analog and digital (displayed at the [www.izor.hr](http://www.izor.hr) site) tide gauge which are not in the network coordinated by the HI

### Ocean Modeling activities:

- the group for ocean modeling exist in the following institutes:
- Institute of Oceanography and Fisheries, Split
- Geophysical Institute “Andrija Mohorovičić”, Zagreb

## CAPACITY BUILDING IN SUPPORT OF GOOS

- faculty course in oceanography from the University of Zagreb
- post grad. course in oceanography from the University of Zagreb
- faculty course in marine ecology from the University of Split
- faculty course in fisheries from the University of Split

## IMPEDIMENTS TO PROGRESS

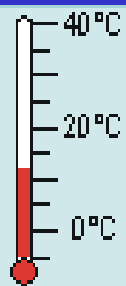
- the cost of the national monitoring is completely covered directly by the Croatian government
- the cost of other monitoring projects comes from the third parties, mainly governmental agencies

## INDICATIONS OF FINANCIAL CONTRIBUTION TO GOOS INVESTMENT IN NATIONAL ACTIVITIES

- the national monitoring has been signed in 1998 with the Croatian government for the 6 years period but with the intention to become permanent project

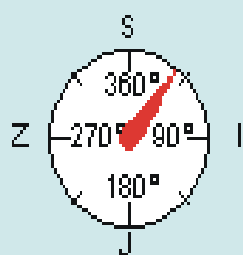
## INVESTMENT IN NATIONAL & INTERNATIONAL COORDINATION

- within the frame of national monitoring
- Croatian participation in the MAMA project is a step towards both national and international coordination



TEMPERATURA

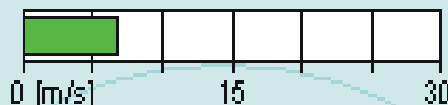
**11.9 °C**



SMJER VJETRA

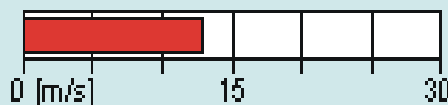
**37 ° Mag S**

### ZRAK



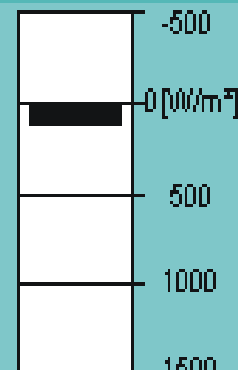
BRZINA VJETRA

**7 m/s 25 km/h**



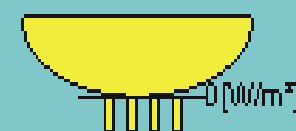
UDAR VJETRA

**13 m/s 46 km/h**



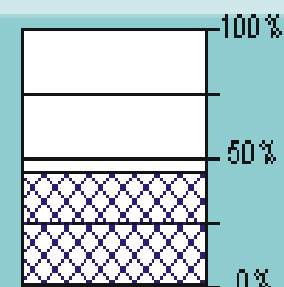
NETO RADIJACIJA

**140 W/m²**



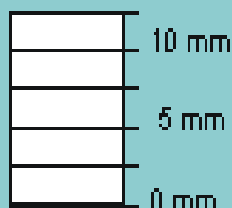
SUNČEVA RADIJACIJA

**217 W/m²**



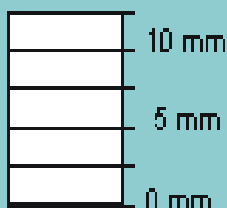
VLAŽNOST ZRAKA

**44 %**



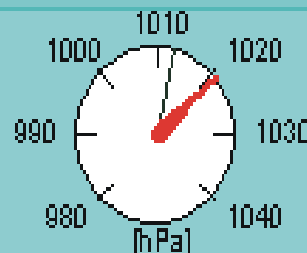
mm u zadnjih 10 min

**0.00**



mm u zadnji 1 sat

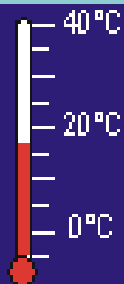
**0.00**



TLAK ZRAKA

**1021 hPa**

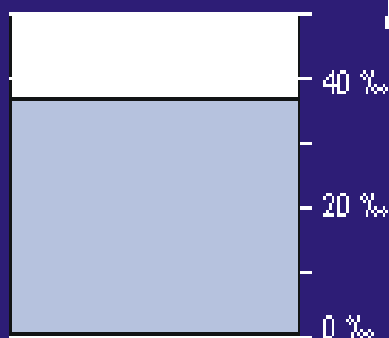
**INSTITUT ZA OCEANOGRAFIJU I RIBARSTVO - SPLIT**  
**28.11.2000. 09:00 učestalost: 10min**



TEMPERATURA

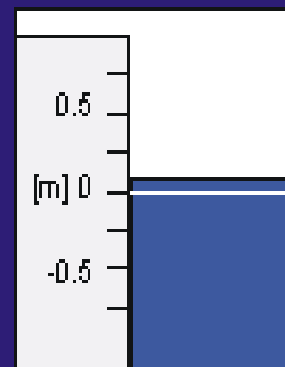
**16.6 °C**

### MORE



SLANOST

**37.0 ‰**



RAZINA MORA

**0.01 m**



## CRUISES IN 2001

19-24 APRIL

16-27 JUNE

11-17 JULY

10-20 AUGUST

25 SEPTEMBER-1 OCTOBER

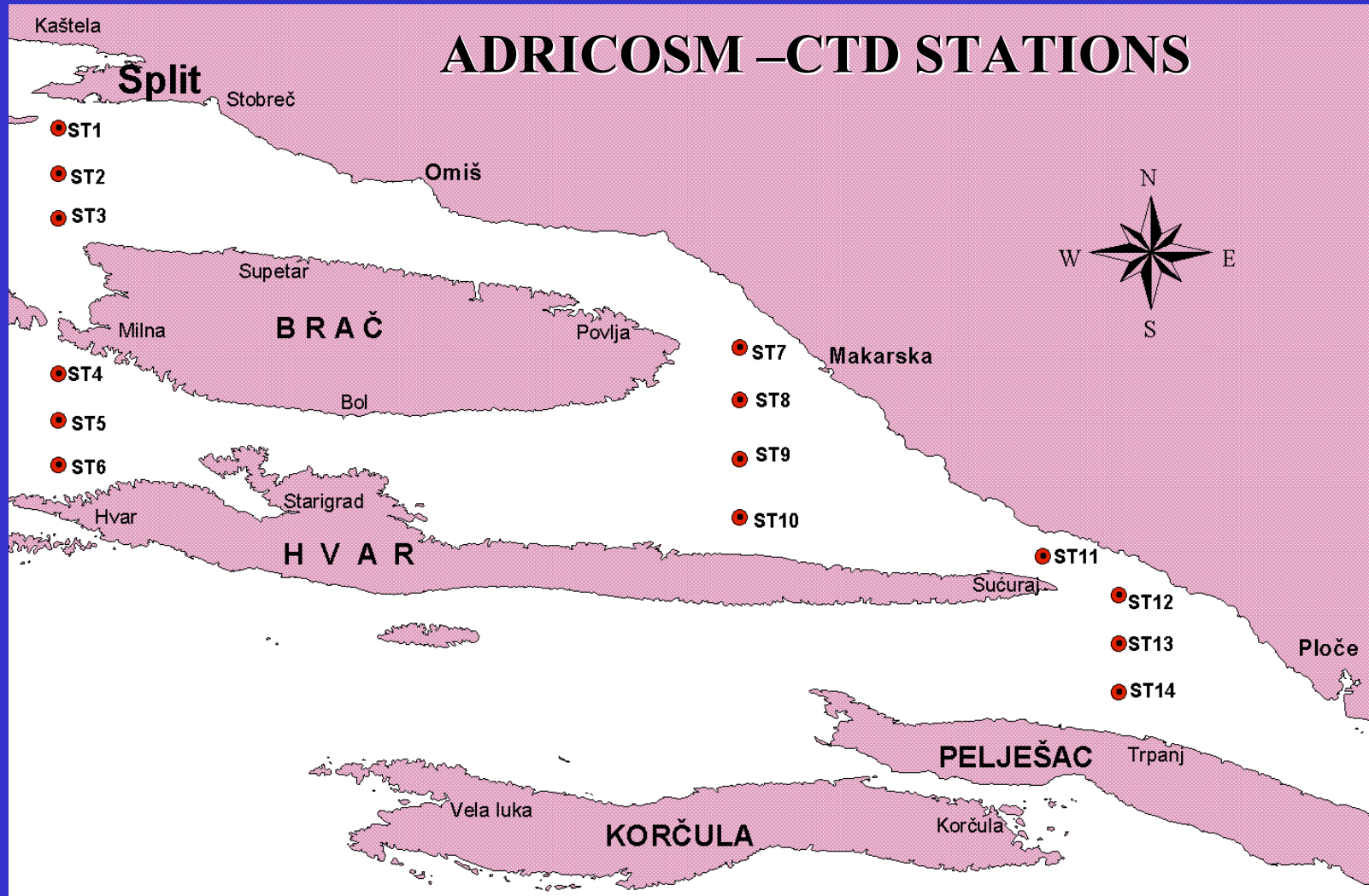
30 OCTOBER-9 NOVEMBER

19-20 DECEMBER





# ADRICOSM –CTD STATIONS



# MODELED SEA SURFACE CURRENTS (m/sec)

